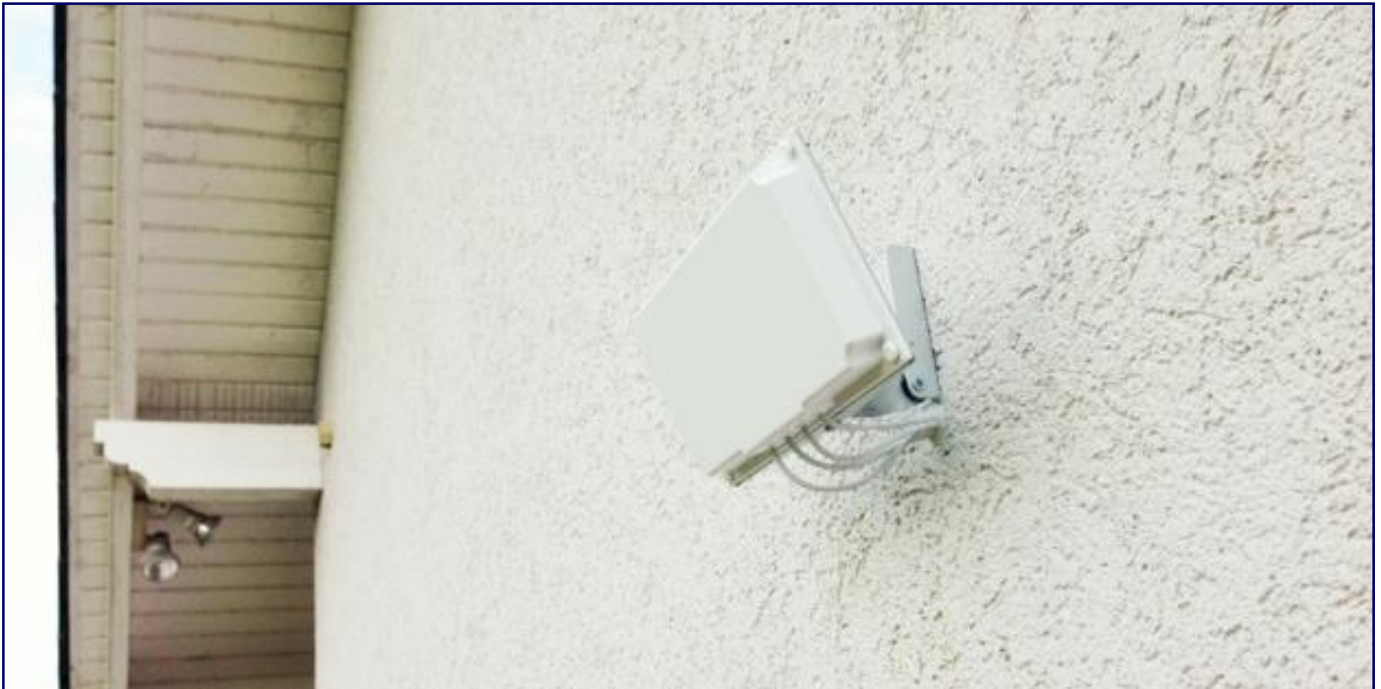


# OUTDOOR PAN & TILT ANTENNA BRACKET

Part No: B2566NPA



*For Cisco Dual Band Patch Panel Antenna (Part No AIR-ANT2566P4W-R=)*



This outdoor antenna bracket is designed specifically for the Cisco 4.4 dBi dual band patch panel directional antenna (Cisco part number AIR-ANT2566P4W-R=). The antenna components go through an anodising treatment to provide an aesthetically pleasing and weatherproof finish.

## BENEFITS

The performance of your Cisco wireless LAN can be compromised by poor antenna installation. The unique two hinge design of this antenna mounting bracket allows the antenna to be aimed specifically at its intended target. This is achieved by 'pan' and 'tilt' movement of the face of the antenna to provide adjustment in both the horizontal and vertical planes.

The antenna mounting bracket is designed for easy mounting to any flat surface and ships with fixing stud bolts for attaching the Cisco antenna to the front face of the bracket.

DW WiFi offers a range of indoor and outdoor pan and tilt antenna brackets specifically for the following Cisco 2.4 GHz, 5 GHz and dual band patch antennas.



AIR-ANT2566P4W-R=



AIR-ANT5160NP-R=



AIR-ANT2460NP-R=



AIR-ANT2465P-R=



AIR-ANT2460P-R=

**PLEASE CONTACT DW WiFi TO REQUEST INFORMATION ON OUR FULL RANGE OF ACCESSORY PRODUCTS FOR THE CURRENT RANGE OF CISCO ACCESS POINTS AND PATCH ANTENNAS**

## HOW CAN WE HELP YOU?

DW WiFi Hermes House, Andoversford Link, Andoversford Business Park, Andoversford, Gloucestershire, GL54 4LB Tel: +44 (0)1242 820693 sales@dw-wifi.com [www.wifiprofessionalservices.com](http://www.wifiprofessionalservices.com)